



SHOWCASE® Image Center Installation

Operating System- The Image Center requires Windows 10, 11 or Server 2012R2, 2016, 2019, 2022. It runs on 64-bit hardware and virtual machines.

1. ShowCase Image Center Installer

Download the Image Center installer from <http://www.triltech.com/download.html>. Save the installer in a location on your computer that you can easily find again.

2. Install the ShowCase Image Center software

Double-click on the installer file (ImageCenterInstaller_x.y.z) to start installation. Your operating system may ask “Do you want to allow the following program to make changes to this computer?”. Click Yes, then follow the prompts for installation.

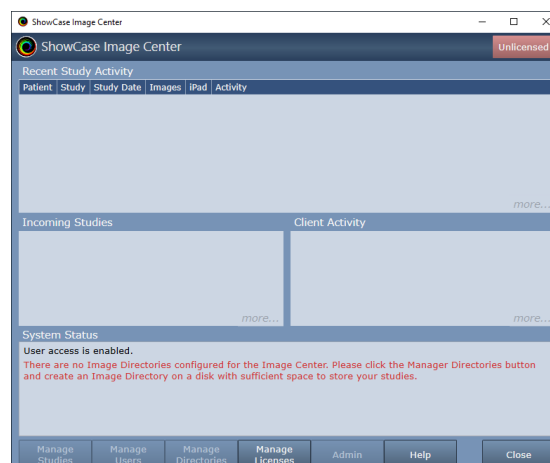


After you have read and agreed to the licensing agreement the installer runs for several minutes. Additional information dialogs appear during the installation process, but you do not need to respond to these dialogs.

When the installer completes, click the **Finish** button. If you check “Launch ShowCase Image Center”, the Image Center Console appears. It may take 10 to 20 seconds for the Image Center to start up the first time.

3. License the Image Center

When Image Center is started for the first time, the Console will look like this:



Note the “Unlicensed” status in the Console’s status indicator in the upper right corner. To license your copy of Image Center, click the **Manage Licenses** button:



Enter your License Key (e.g. IC-XYZ-1234-4321) into the text area and click the **Activate** button. A few messages will appear around contacting the license server, the dialog will disappear, and the Console status will change from “Unlicensed” to “Running”. Now that the Image Center is licensed, you can proceed with the rest of the Image Center configuration (setting up Image Directories, Users, etc.).

Installing with Your Own SQL Server

Image Center 2.1 and later can be configured to use your own SQL Server installation, instead of the embedded SQL Server Express installer built into the full Image Center installer. SQL Server 2014 or later is supported.

Note: The Image Center is a high performance system, performing hundreds of database transactions a second under peak loads. It is designed to work with a local SQL Server installation. Issues with performance or behavior may result if your SQL Server installation is not properly configured to handle that level of activity. Issues with customer SQL Server integration are purely the responsibility of your IT group to solve should they occur.

Prerequisites

You will need SQL Server 2014 or later installed and configured with SA authentication, password of your choosing.

Installation

1. Download the Image Center Customer Supplied SQL Server installer from <http://www.triltech.com/download.html>
2. Run the installer
3. When prompted, enter the Server Name and SA password for the database server.
4. Click “Test SA Password” to verify your server is accessible and your password is good.
5. Click OK

The installation should complete, and your Image Center should start working as soon as you license it.

SHOWCASE® is a registered trademark of Trillium Technology, Inc.